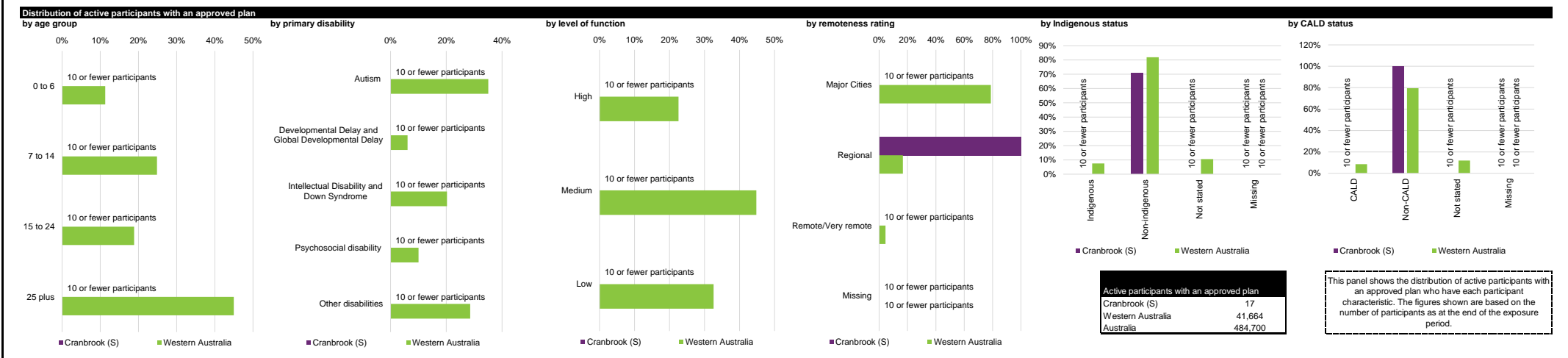
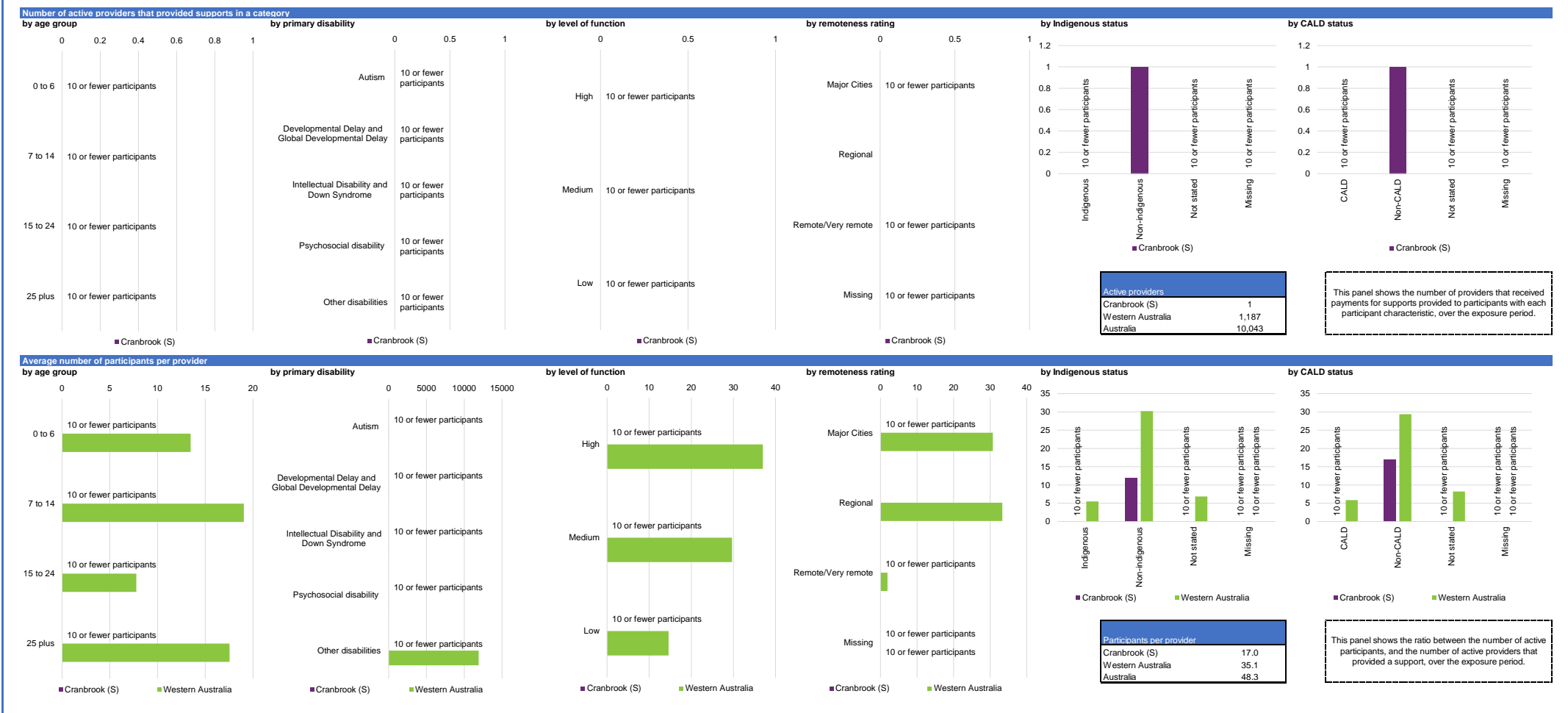


Participant profile

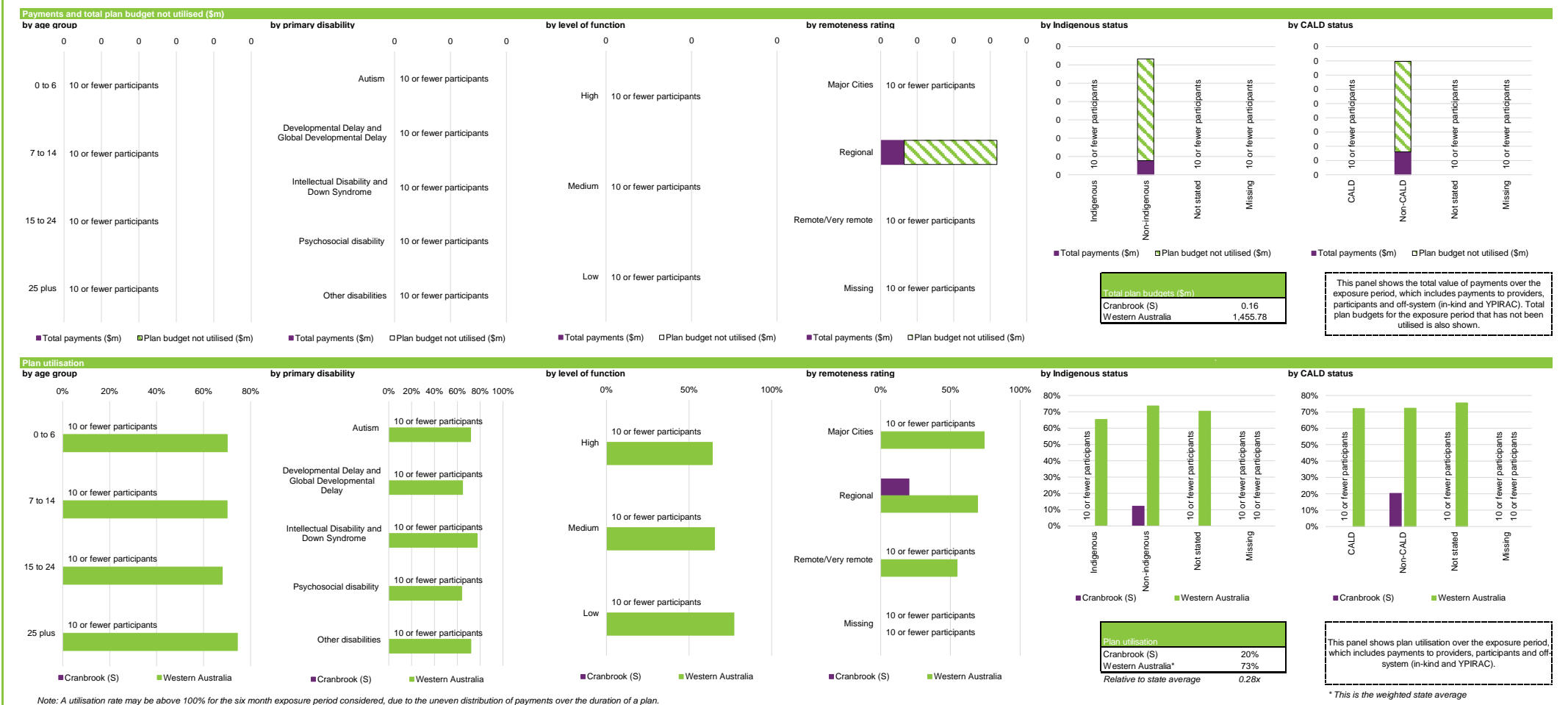
Please note that the data presented are based on only six months of data and not a full year.



Service provider indicators



Plan utilisation



Participant Category Detailed Dashboard as at 31 December 2021 (exposure period: 1 April 2021 to 30 September 2021)

LGA: Cranbrook (S) | Support Category: All | All Participants

Outcomes framework



Support category summary

| Support category | Active participants with approved plans | Active providers | Participants per provider | Total plan budgets (\$m) | Average plan budget (\$) | Payments (\$m) | Average payments (\$) | Utilisation | Outcomes indicator on choice and control | Has the NDIS helped with choice and control? |
|--------------------------------|---|---------------------------------|---------------------------------|---------------------------------|---------------------------------|---------------------------------|---------------------------------|---------------------------------|--|--|
| Core | | | | | | | | | | |
| Consumables | 10 or fewer participants | 10 or fewer participants | 10 or fewer participants | 10 or fewer participants | 10 or fewer participants | 10 or fewer participants | 10 or fewer participants | 10 or fewer participants | 10 or fewer participants | 10 or fewer participants |
| Daily Activities | 10 or fewer participants | 10 or fewer participants | 10 or fewer participants | 10 or fewer participants | 10 or fewer participants | 10 or fewer participants | 10 or fewer participants | 10 or fewer participants | 10 or fewer participants | 10 or fewer participants |
| Community | 10 or fewer participants | 10 or fewer participants | 10 or fewer participants | 10 or fewer participants | 10 or fewer participants | 10 or fewer participants | 10 or fewer participants | 10 or fewer participants | 10 or fewer participants | 10 or fewer participants |
| Transport | 10 or fewer participants | 10 or fewer participants | 10 or fewer participants | 10 or fewer participants | 10 or fewer participants | 10 or fewer participants | 10 or fewer participants | 10 or fewer participants | 10 or fewer participants | 10 or fewer participants |
| Core total | 11 | 0 | 0.0 | 0.1 | 5,284 | 0.0 | 724 | 14% | 10 or fewer participants | 10 or fewer participants |
| Capacity Building | | | | | | | | | | |
| Choice and Control | 10 or fewer participants | 10 or fewer participants | 10 or fewer participants | 10 or fewer participants | 10 or fewer participants | 10 or fewer participants | 10 or fewer participants | 10 or fewer participants | 10 or fewer participants | 10 or fewer participants |
| Daily Activities | 17 | 1 | 17.0 | 0.1 | 3,885 | 0.0 | 1,318 | 34% | 10 or fewer participants | 10 or fewer participants |
| Employment | 10 or fewer participants | 10 or fewer participants | 10 or fewer participants | 10 or fewer participants | 10 or fewer participants | 10 or fewer participants | 10 or fewer participants | 10 or fewer participants | 10 or fewer participants | 10 or fewer participants |
| Relationships | 10 or fewer participants | 10 or fewer participants | 10 or fewer participants | 10 or fewer participants | 10 or fewer participants | 10 or fewer participants | 10 or fewer participants | 10 or fewer participants | 10 or fewer participants | 10 or fewer participants |
| Social and Civic | 10 or fewer participants | 10 or fewer participants | 10 or fewer participants | 10 or fewer participants | 10 or fewer participants | 10 or fewer participants | 10 or fewer participants | 10 or fewer participants | 10 or fewer participants | 10 or fewer participants |
| Support Coordination | 10 or fewer participants | 10 or fewer participants | 10 or fewer participants | 10 or fewer participants | 10 or fewer participants | 10 or fewer participants | 10 or fewer participants | 10 or fewer participants | 10 or fewer participants | 10 or fewer participants |
| Capacity Building total | 17 | 1 | 17.0 | 0.1 | 4,556 | 0.0 | 1,430 | 31% | 10 or fewer participants | 10 or fewer participants |
| Capital | | | | | | | | | | |
| Assistive Technology | 10 or fewer participants | 10 or fewer participants | 10 or fewer participants | 10 or fewer participants | 10 or fewer participants | 10 or fewer participants | 10 or fewer participants | 10 or fewer participants | 10 or fewer participants | 10 or fewer participants |
| Home Modifications | 10 or fewer participants | 10 or fewer participants | 10 or fewer participants | 10 or fewer participants | 10 or fewer participants | 10 or fewer participants | 10 or fewer participants | 10 or fewer participants | 10 or fewer participants | 10 or fewer participants |
| Capital total | 10 or fewer participants | 10 or fewer participants | 10 or fewer participants | 10 or fewer participants | 10 or fewer participants | 10 or fewer participants | 10 or fewer participants | 10 or fewer participants | 10 or fewer participants | 10 or fewer participants |
| All support categories | 17 | 1 | 17.0 | 0.2 | 9,367 | 0.0 | 1,898 | 20% | 10 or fewer participants | 10 or fewer participants |

Note: Only the major support categories are shown.

Note: The Capacity Building total includes Health and Wellbeing, Home Living and Lifelong Learning although these support categories are not shown.

Note: A utilisation rate may be above 100% for the six month exposure period considered, due to the uneven distribution of payments over the duration of a plan.

In addition, the utilisation rate for core supports may be above 100% due to lungbility which refers to the ability of participants to use their funding flexibly between different support types, albeit within certain limitation.

| Indicator definitions | |
|--|---|
| Active participants with approved plans | Number of active participants who have an approved plan and reside in the LGA / have supports relating to the support category in their plan. |
| Active providers | Number of providers that received payments for supports provided to participants within the LGA / support category, over the exposure period. |
| Participants per provider | Ratio between the number of active participants and the number of active providers. |
| Total plan budgets | Value of supports committed in participant plans for the exposure period. |
| Payments | Value of all payments over the exposure period, including payments to providers, payments to participants and off-system payments (in-kind and Younger People In Residential Aged Care (YPIRAC)). |
| Utilisation | Ratio between payments and total plan budgets. |
| Outcomes indicator on choice and control | Proportion of participants who reported in their most recent outcomes survey that they choose who supports them. |
| Has the NDIS helped with choice and control? | Proportion of participants who reported in their most recent outcomes survey that the NDIS has helped with choice and control. |